

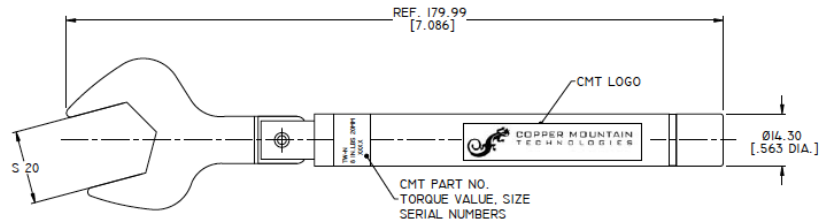
# Torque Wrenches

## TW-N N-Type Torque Wrench

The TW-N is a N-Type, proof coupling torque wrench used to properly install or disassemble a wide range of coaxial connectors.



HEX	Torque	Description
19mm - 3/4"	1.35 Nm - 12 in. lbs	N stainless to N stainless (CMT R60, R140, R180, N612, and N912 is equipped with N male and 19mm HEX. 19mm is also used for APC-7 / 7mm connectors)
19mm - 3/4"	0.9 Nm - 8 in. lbs	N stainless to N nickel/silver plated (DUT) (19mm is also used for APC-7 / 7mm connectors)
20mm - 25/32"	1.35 Nm - 12 in. lbs	N stainless to N stainless
20mm - 25/32"	0.9 Nm - 8 in. lbs	N / NMD stainless to NMD stainless or N nickel/silver plated (DUT)



## TW-S SMA-Type Torque Wrench

The TW-S is a SMA Type, proof coupling torque wrench used for SMA 3.5mm, 2.92mm, 2.4mm and 1.85mm Type Connectors.



HEX	Torque	Description
8mm - 5/16"	0.9 Nm - 8 in.lbs	3.5mm stainless to 3.5mm stainless (This type is also used for the following types in stainless - SMA / 3.5mm / 2.92mm / 2.4mm / 1.85mm)
8mm - 5/16"	0.56 Nm - 5 in. lbs	3.5mm stainless to SMA gold/silver plated DUT or SMA gold/silver plated to SMA gold/silver plated

